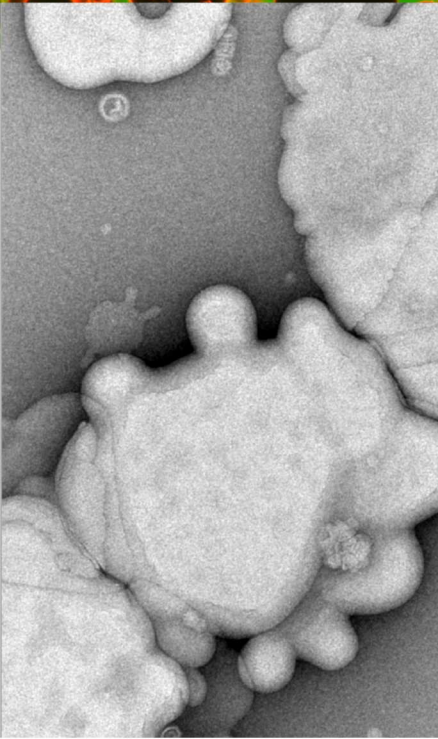
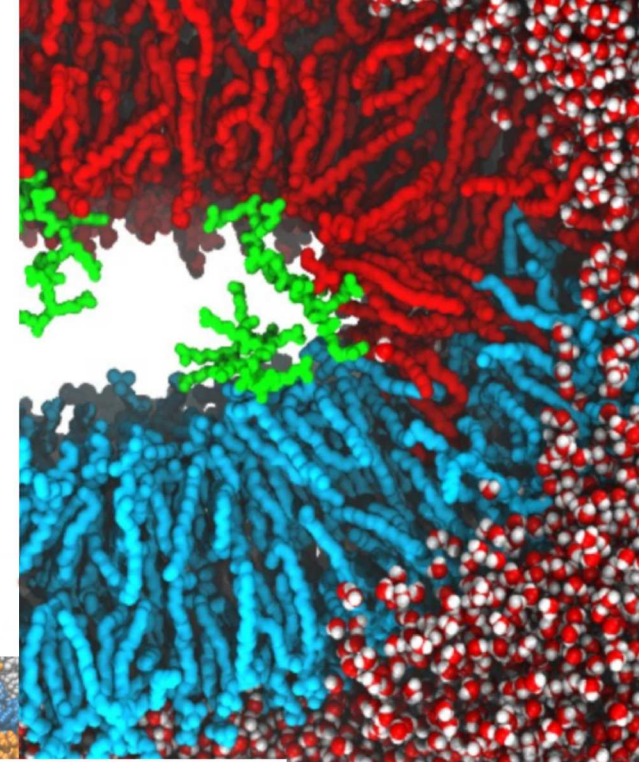
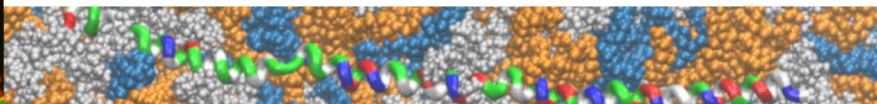


$$E = \int dA \left\{ \frac{\kappa}{2} (\tilde{H} - J_S)^2 + \bar{\kappa} \tilde{K}_G + \frac{\kappa_t}{2} \mathbf{t}^2 \right\}$$



PhD and Postdoc Positions Available - March 1, 2020

in the new PRIMUS group at the Mathematical Institute of Charles University
Theory of Biomembranes - Molecular Simulation Group

The group offers interdisciplinary research projects centered on the theoretical modeling of **biomembranes** and their interactions. Our approach combines

- ▷ Molecular Simulations
- ▷ Continuum Theory
- ▷ Electronic Structure
- ▷ Biophysical Models

with experimental data from international collaboration partners. Together we will create a new framework to improve the modeling of biomembranes and apply it to the important questions in biomedical research. For more information contact the PI: Christoph Allolio - allolio@fh.huji.ac.il

